

# MODEL: IR Link

(IR communication device)

## User Manual



**SENKO**  
SenKo Co., Ltd

# Index

Index.....	2
Product Overview.....	3
1. Introduction .....	3
1.1. Connection.....	3
1.2. Menu Bar .....	4
2. Tool.....	4
2.1 Tool.....	4
2.2. IR Link .....	6
2.3. Basic Option .....	6
2.4. Advanced Option.....	6
2.5 Check Option .....	7
3. Specification.....	8

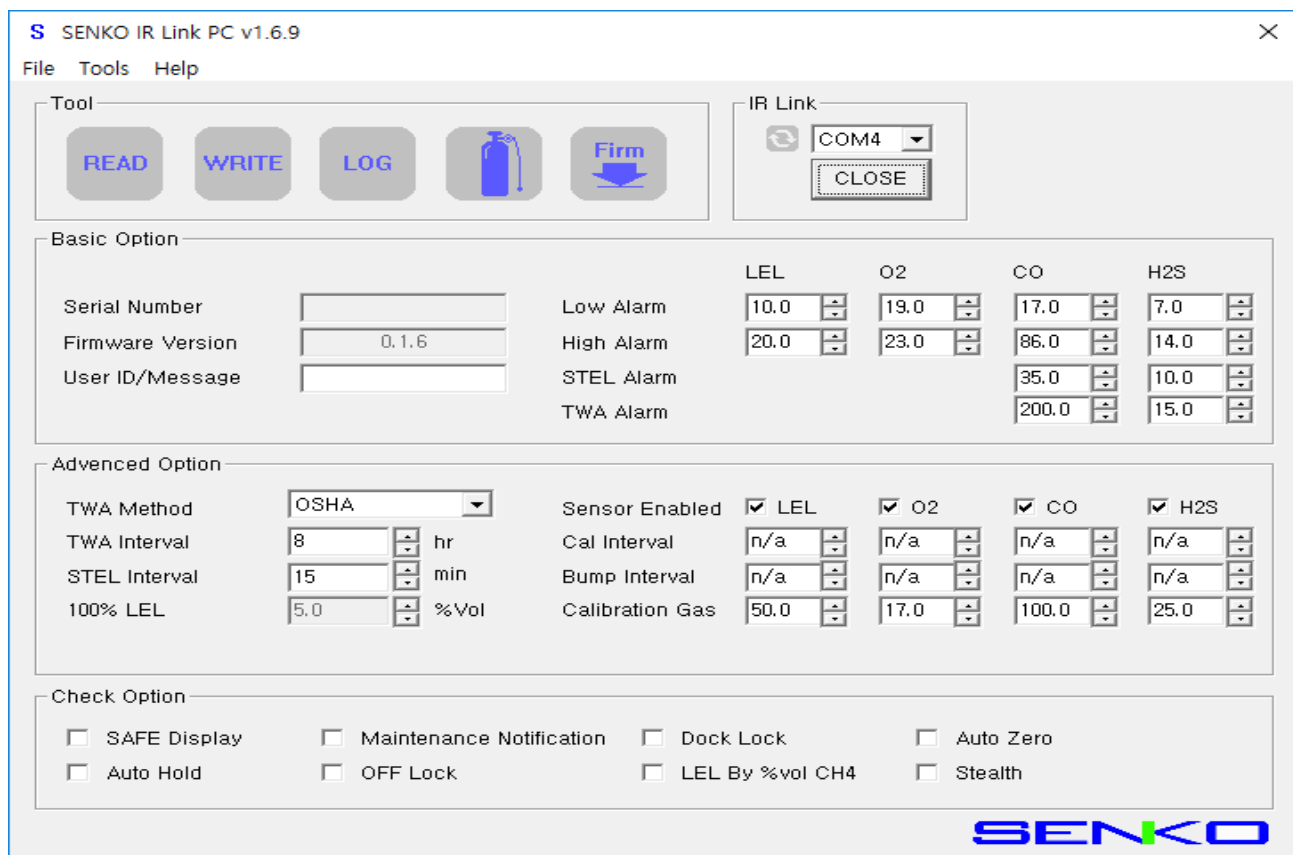
## Product Overview

The IR Link is a device for communicating with the MGT multigas monitor. It uses dedicated software provided by Senko to communicate with the monitor.

### 1. Introduction

#### 1.1. Connection

To interact with MGT, be sure to install the software and connect the IR Link cable to the computer. And place the top of the MGT face down on the IR Link LCD screen. Then open the MGT manager and click on the "open" button of the MGT manager. Once the connection is established, the message "Read Complete" will appear.



## 1.2. Menu Bar

**File:** Two options

Load: Open the installed settings. (\* .cfg)

Save: Download the new settings. (\* .cfg)

**Tools:** Four options

**Calibration:** Initiate a fresh air or span calibration.

**Log Read:** Download the datalog from the MGT.

**Log Erase:** Clear the log from the MGT.

**FW Upgrade:** Upgrade the firmware on the MGT.


**About:** Information about the company


## 2. Tool

### 2.1 Tool




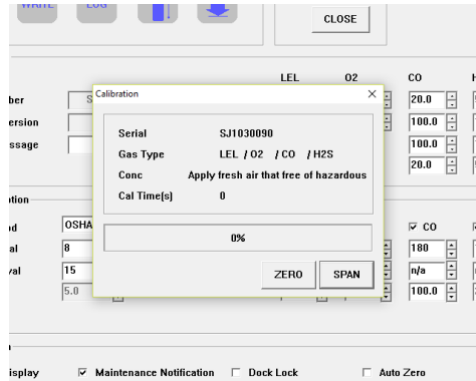
Press the READ button  to download the current configuration on the MGT

Press the WRITE button  to upload a new configuration to the MGT

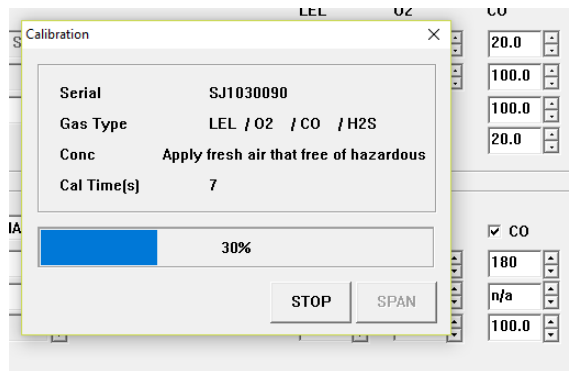
Press the LOG button  to download the datalog from the MGT



Press the button  to begin the calibration sequence.



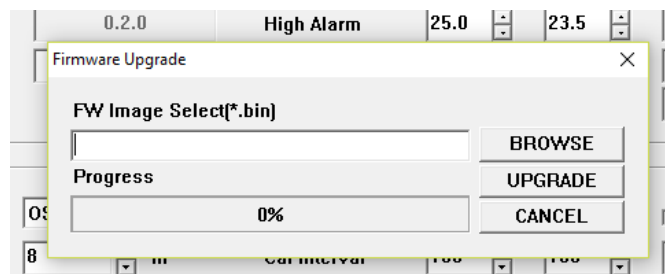
Press ZERO or SPAN to start the calibration sequence. Zero is the calibration in fresh air. Span calibration requires test gas



Bar shows progress during calibration

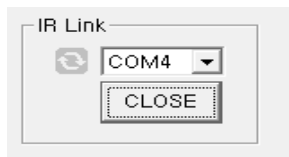


Press the button  to upgrade the firmware in the MGT



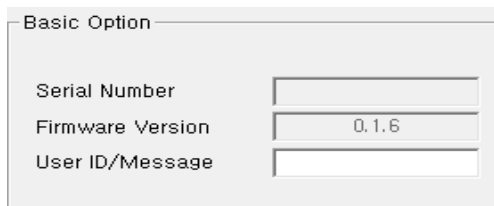
Press BROWSE and locate the latest firmware to load into the MGT. Then press UPGRADE.

## 2.2. IR Link



Choose and open a communication port on the PC. Press OPEN to open the port and connect

## 2.3. Basic Option



The serial number and firmware version of the connected MGT is displayed.

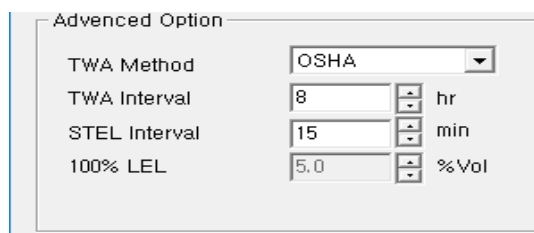
In the USER ID / Message box, a unique name or message can be assigned to the MGT.

	LEL	O2	CO	H2S
Low Alarm	10.0	19.0	17.0	7.0
High Alarm	20.0	23.0	86.0	14.0
STEL Alarm			35.0	10.0
TWA Alarm			200.0	15.0

Alarm set points: users can define alarm set points; Low, high, STEL and TWA.

\* Unless necessary, please keep the default setpoints.

## 2.4. Advanced Option



TWA Method allows you to configure the calculation of the time-weighted average alarm. The options are OSHA or ACGIH. TWA Interval defines the duration of the long-term exposure calculation (normally 8 hours). STEL Interval defines the duration of the calculation of the short-term exposure (normally 15 minutes)

\* Unless necessary, please keep the default setpoints.

Sensor Enabled	<input checked="" type="checkbox"/> LEL	<input checked="" type="checkbox"/> O2	<input checked="" type="checkbox"/> CO	<input checked="" type="checkbox"/> H2S
Cal Interval	n/a	n/a	n/a	n/a
Bump Interval	n/a	n/a	n/a	n/a
Calibration Gas	50.0	17.0	100.0	25.0

The check boxes allow you to enable or disable each sensor.

Cal Interval sets a reminder time for calibration

Bump Interval sets a reminder time for the functional test.

Calibration Gas allows different concentrations of test gas to be used. Enter the concentrations indicated on the test gas cylinder used.

## 2.5 Check Option

Check Option			
<input type="checkbox"/> SAFE Display	<input type="checkbox"/> Maintenance Notification	<input type="checkbox"/> Dock Lock	<input type="checkbox"/> Auto Zero
<input type="checkbox"/> Auto Hold	<input type="checkbox"/> OFF Lock	<input type="checkbox"/> LEL By %vol CH4	<input type="checkbox"/> Stealth

**SAFE Display:** In the open air, the message "Safe Zone" is displayed. When gas is present, the alarm will be activated and the gas concentration will be displayed.

**Maintenance Notification:** When the bump calibration and due date arrives, the LED flashes.

**Dock Lock:** Disable calibration without using IR Link or Docking station.

**Auto Zero:** Each time you turn on the device, the fresh air calibration will be done automatically.

**Auto Hold:** In the event of a gas leak, although the users escape dangerous situations, the alarm will continue to activate unless the button is pressed.

**OFF Lock:** Disable MGT to disable until you clear this check box.

**LEL by% vol CH4:** Adjust the maximum range of% vol based on 100% LEL.

**Stealth:** Disables the alarm, buzzer and LED. It is a specialized application

### 3. Specification

Modèle	IR Link
Distance de communication	40 -406mm
Garantie	2 ans
Température	-10°C ~ +40°C
Humidité	10 to 95% HR( Sans condensation )
Rapports	Journaux d'événements de MGT
Système opérateur	Compatible avec Microsoft Windows XP, Vista, Windows 7 et Windows 10
Puissance	Puissance USB
Dimensions	(P x L x l) 51 x 44 x 20mm
Poids	24.3 g



## Limited Warranty

SENKO warrants that this product is free from defects in workmanship and materials, under normal use and maintenance, for two years from the date of purchase from the manufacturer or authorized reseller of the product.

The manufacturer is not responsible (under this warranty) if its tests and examinations reveal that the alleged product defect does not exist or was caused by misuse, neglect or improper installation, tests or calibrations of the buyer (or third parties). Any unauthorized attempt to repair or modify the product, or any other cause of damage going beyond the intended range of use, in particular damage caused by fire, lightning, water damage or any other danger, cancels the manufacturer's liability.

In the event that a product does not perform according to the manufacturer's specifications during the applicable warranty period, please contact the authorized reseller of the product or the SENKO service center at + 44 191 428 3415 for repair / return information.



Senko Europe, Jarrow Business Centre, Viking Industrial Park, Jarrow, NE32 3DT,  
UK

**Tel : +44 191 428 3415**

**Email :** [latest@senkoeurope.com](mailto:latest@senkoeurope.com) **Web :** [www.senkoeurope.com](http://www.senkoeurope.com)